

# ELECTRIC - HYDRAULIC CRANES

## 3215E (ET10KX)



### SPECIFICATIONS

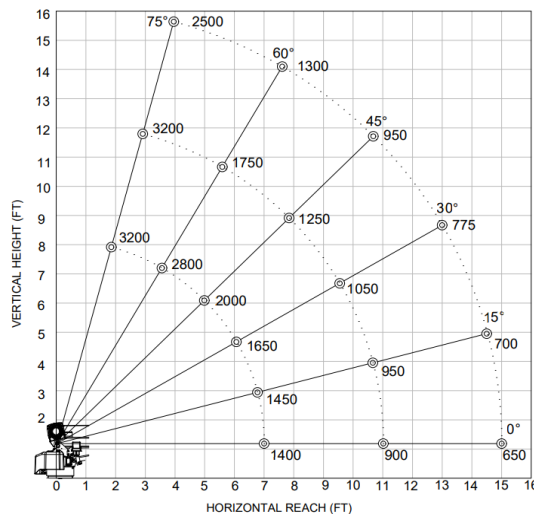
<b>Lifting Capacities:</b>	3,200 lbs
<b>Crane Rating:</b>	10,000 ft-lbs
<b>Mounting Space:</b>	17.38" x 13.50"
<b>Stowed Height:</b>	28.6"
<b>Rope Diameter:</b>	1/4" @ 65'
<b>Line Pull Speed</b>	25 ft/min (Single-line) 4 ft/min (Double-line)
<b>Max. Single-line:</b>	1,600 lbs
<b>Max. Double-line:</b>	3,200 lbs
<b>Rotation:</b>	360° Continuous
<b>Power Supply Requirements:</b>	<b>Power Supply:</b> Electric 12V DC <b>Requirements:</b> 12v DC Battery
<b>Hydraulic Req:</b>	Self-Contained w/ Power Unit
<b>Boom Elevation:</b>	-8° to +75°
<b>Controls:</b>	Electric On/ Off Functions
<b>Boom Extension:</b>	Power: 7' - 11' Manual: 11' - 15'
<b>Weight:</b>	650 lbs
<b>Minimum Vehicle Class:</b>	Class 2 (8,000 lbs GVWR)
<b>Optional:</b>	- Proportional - Non-Proportional - Corded - Wireless

The Ventura 3215E service crane is a versatile application that is neither too large or small for a majority of lifting jobs. This crane has been utilized heavily in municipal/ public works lifting anything from service equipment to fire hydrants throughout the United States. With a 10,000 ft-lb crane rating and a 3,200 lb maximum capacity, the 3215E can be installed on trucks with a minimum 8,000 lbs GVWR.

### FEATURES

- **INDUSTRY LEADING IN ELECTRIC-HYDRAULIC CRANES**
- **POWERFUL DC ELECTRIC WINCH**  
The ET series winches combine a powerful permanent magnet DC motor with robust sealing with proven 3-stage, all-metal gear train. Permanent grease lubrication means years of trouble-free service.
- **MANUAL CRANE OVERRIDE**  
Each ET series crane gives the user the ability to operate and stow the crane if there is power loss through the remote
- **POWERFUL HYDRAULIC SLEW DRIVE**  
Driven from high quality durable electric motor
- **COUNTER-BALANCE VALVE**  
Counterbalance valving in all cylinders for increase safety and protection during operation

MAXIMUM LOAD CAPACITY CHART



\*Venturo Body: VP16 Crane Service Body