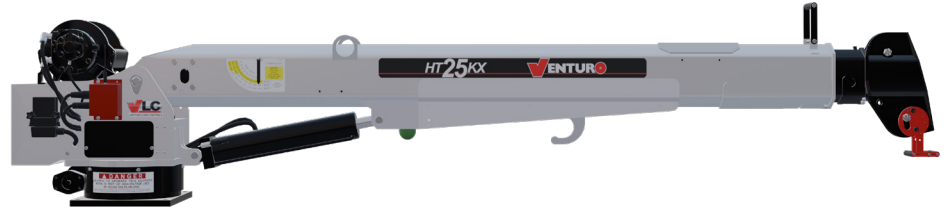


# HYDRAULIC CRANES HT25KX



<b>Max. Capacity</b>	5,000 LBS
<b>Crane Rating</b>	25,000 FT-LBS
<b>Max. Reach</b>	20 FT
<b>Min. GVWR</b>	11,000 LBS
<b>Controls</b>	VLC™

The Venturo HT25KX with VLC™ controls features a maximum capacity of 5,000 lb. at 5 ft. Venturo's new Electronic Crane Control Management System provides added safety and benefits for crane operators. Benefits include a standard, wireless, pistol-grip controller, overload protection which controls and prevents any type of overload, LCD Display Screen alerts, transmitter handle vibrations, green/yellow/red alert lights under boom, and corresponding lights on the receiver. The LCD display shows percentage of load, boom angle in degrees and percentage of total capacity during crane operation. The VLC™ system also provides vehicle stability and grade control.

## VLC™ SYSTEM CONTROLS

### Multiple Safety and Capacity Alerts

Green/Yellow/Red alert light located on the underside of the boom.

### Overload/Stability Safety

The VLC system controls and prevents any type of overload on the crane and also provides stability and grade control.

### Wireless Remote

The wireless remote, pistol-grip controller is a standard feature as part of the VLC™ system for ALL proportionally-controlled hydraulic Venturo service cranes.



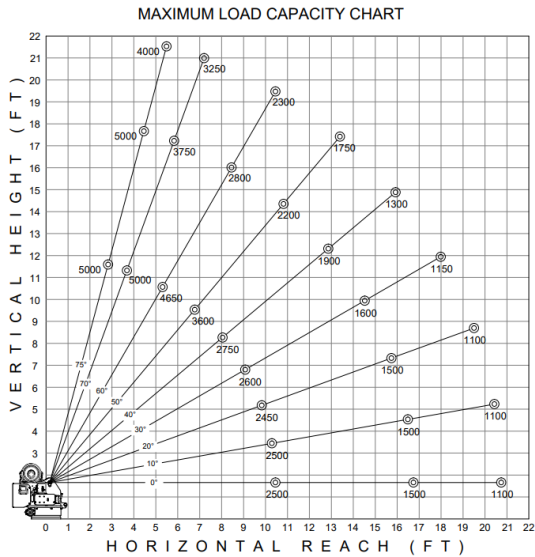
## FEATURES

- **AUTO ADJUST ANTI-TWO BLOCK**  
 Innovative, rugged and compact anti-two block design automatically adjusts to boom angle. This minimizes hook-to-boom tip height and is less prone to damage.
- **CUSTOM H-VALVING**  
 Provides high hydraulic flow for safe crane function, minimizes quick, jerky functions
- **SLEW DRIVE**  
 Extra gear that allows for smooth hydraulic rotation, eliminates jerky movements while under load
- **HEXAGONAL BOOM DESIGN**  
 Greater strength and Increased Load Capacity
- **HIGH WIRE ROPE GAUGES**  
 Increased Strength and durability during operations under load
- **COUNTER-BALANCE VALVES**  
 All cylinders include load bearing counter-balance valves to prevent loads from dropping
- **REAR COVERS**  
 Rear covers now have new knobs that simply twist on/off that allow easier rear cover removal, no tool needed

# HYDRAULIC CRANES HT25KX

## MAXIMUM LOAD CAPACITY

20 ft



WEIGHT OF LOAD HANDLING DEVICES ARE PART OF THE LOAD AND MUST BE DEDUCTED FROM THE GROSS CAPACITY.

## SPECIFICATIONS - 20 FT

<b>Lifting Capacities:</b>	5,000 lbs
<b>Crane Rating:</b>	25,000 ft-lbs
<b>Mounting Space:</b>	17" x 17"
<b>Stowed Height:</b>	30-3/16"
<b>Rope Diameter:</b>	5/16" @ 80"
<b>Line pull speed:</b>	55 ft/min @ 5 GPM (Single) 27 ft/min @ 5 GPM (Double)
<b>Max. Single-line:</b>	2,500 lbs
<b>Max. Double-line:</b>	5,000 lbs
<b>Rotation:</b>	400°
<b>Power Supply Requirements:</b>	PTO & Pump Required 10-12 gpm @ 3,000 psi
<b>Hydraulic Req:</b>	10 gal. reservoir
<b>Boom Elevation:</b>	-8° to + 75°
<b>Controls:</b>	VLC™ (Venturo Logic Controls) Standard Wireless Remote
<b>Boom Extension:</b>	10' - 16' - 20' Full Hydraulic
<b>Weight:</b>	1575 lbs
<b>Minimum Vehicle Class:</b>	Class 3 (11,000 lbs GVWR)
<b>Optional:</b>	Engine Start/Stop & Throttle Controls

\*Venturo Body: VP40 & VP45 Crane Service Body

