



# HYDRAULIC CRANES HT40KX

Max. Capacity	6,000 LBS
Crane Rating	40,000 FT-LBS
Max. Reach	20 FT / 25 FT
Min. GVWR	14,500 LBS
Controls	Full-Hydraulic Proportional



## FULL-HYDRAULIC PROPORTIONAL



The Venturo HT40KX has been the flagship of the HT crane line for many years. With over 6,000 lbs of capacity and a 20 & 25 ft boom extension, the crane can provide operators flexibility on a variety of applications. The HT40KX is perfect for a 14,500 GVWR vehicle giving most mid-size mechanics trucks the tools they need to complete their jobs. The HT40KX comes standard with proportional control, giving operators the ability for variable speed hydraulic functions which include rotation, winch, elevation and extension.

## FEATURES

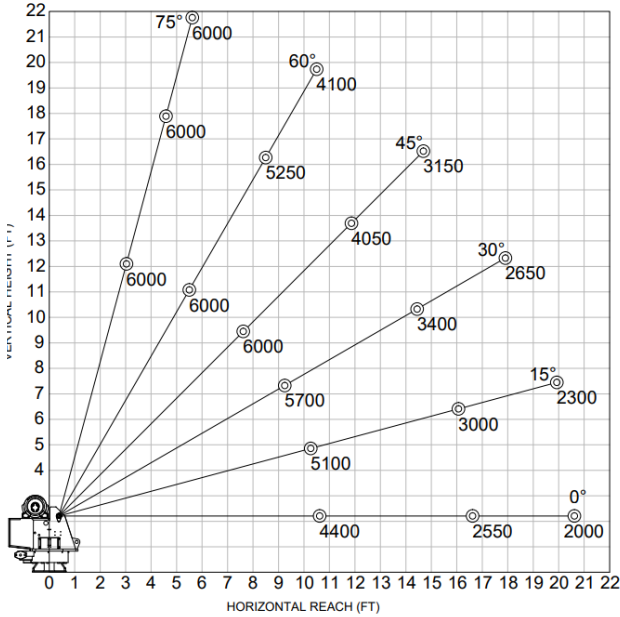
- **AUTO ADJUST ANTI-TWO BLOCK**  
Innovative, rugged and compact anti-two block design automatically adjusts to boom angle. This minimizes hook-to-boom tip height and is less prone to damage.
- **CUSTOM H-VALVING**  
Provides high hydraulic flow for safe crane function, minimizes quick, jerky functions
- **SLEW DRIVE**  
Extra gear that allows for smooth hydraulic rotation, eliminates jerky movements while under load
- **HEXAGONAL BOOM DESIGN**  
Greater strength and Increased Load Capacity
- **HIGH WIRE ROPE GAUGES**  
Increased Strength and durability during operations under load
- **COUNTER-BALANCE VALVES**  
All cylinders include load bearing counter-balance valves to prevent loads from dropping
- **REAR COVERS**  
Rear covers now have new knobs that simply twist on/off that allow easier rear cover removal, no tool needed
- **PROPORTIONAL CONTROLS**  
Industry Leading proportional controls Gives the operator flexibility with hydraulic speeds Includes multi-function control and smooth variable speed control

# HYDRAULIC CRANES HT40KX

## MAXIMUM LOAD CAPACITY

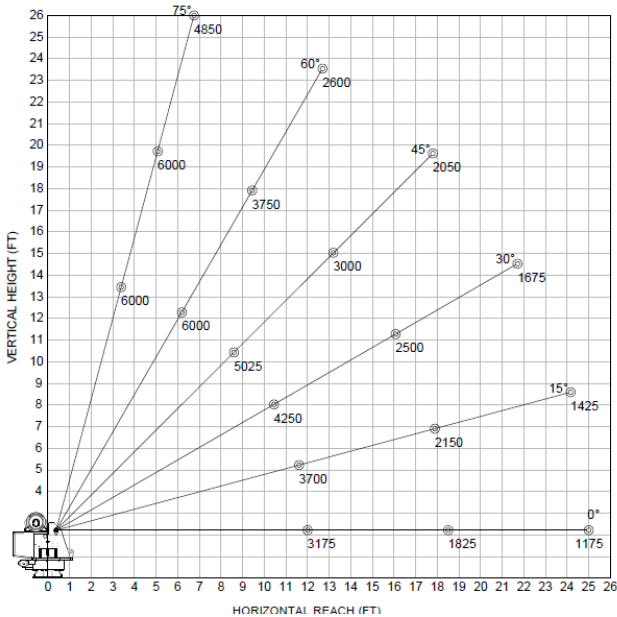
20 ft

MAXIMUM LOAD CAPACITY CHART



25 ft

MAXIMUM LOAD CAPACITY CHART



## SPECIFICATIONS - 20 FT | 25 FT

<b>Lifting Capacities:</b>	6,000 lbs
<b>Crane Rating:</b>	40,000 ft-lbs
<b>Mounting Space:</b>	17 3/4" x 17 3/4"
<b>Stowed Height:</b>	30-7/8"
<b>Rope Diameter:</b>	3/8" @ 100'
<b>Line pull speed:</b>	60 ft/min @ 10 GPM (Single) 30 ft/min @ 10 GPM (Double)
<b>Max. Single-line:</b>	3,000 lbs
<b>Max. Double-line:</b>	6,000 lbs
<b>Rotation:</b>	400°
<b>Power Supply Requirements:</b>	PTO & Pump Required 12 gpm @ 3,000 psi
<b>Hydraulic Req:</b>	25 gal. reservoir
<b>Boom Elevation:</b>	-8° to + 75°
<b>Controls:</b>	Full-Hydraulic Proportional
<b>Boom Extension:</b>	20 ft: 10' - 16' - 20' Full Hydraulic 25 ft: 12' - 18' - 25' Full Hydraulic
<b>Weight:</b>	2000 lbs
<b>Minimum Vehicle Class:</b>	Class 4 (14,500 lbs GVWR)
<b>Optional:</b>	- Coded Remote - Coded and Wireless Remote - Engine Controls

