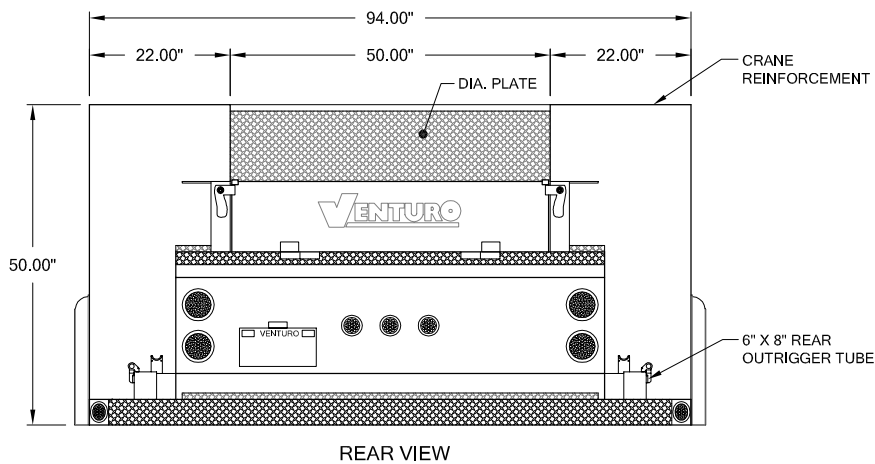
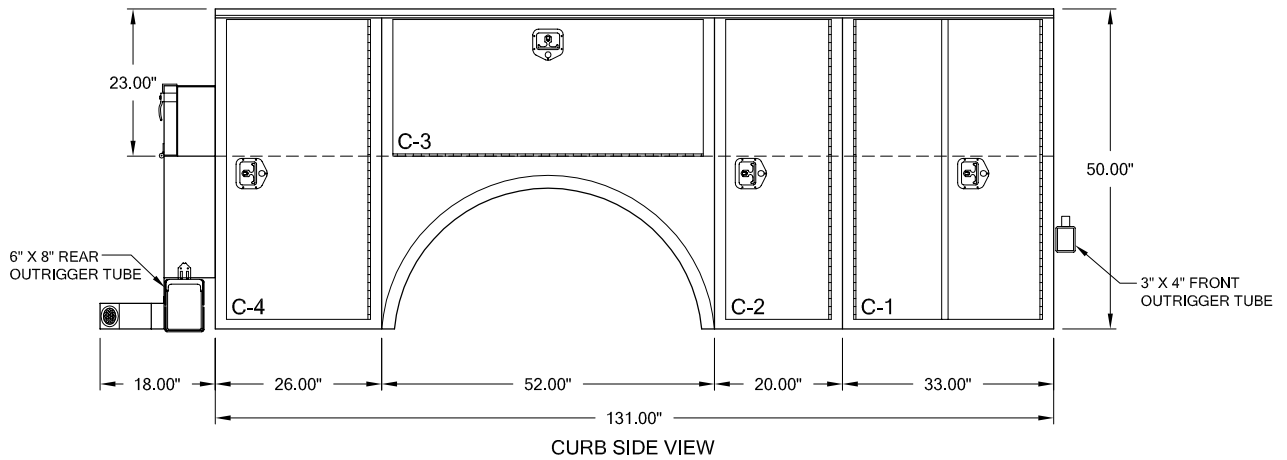
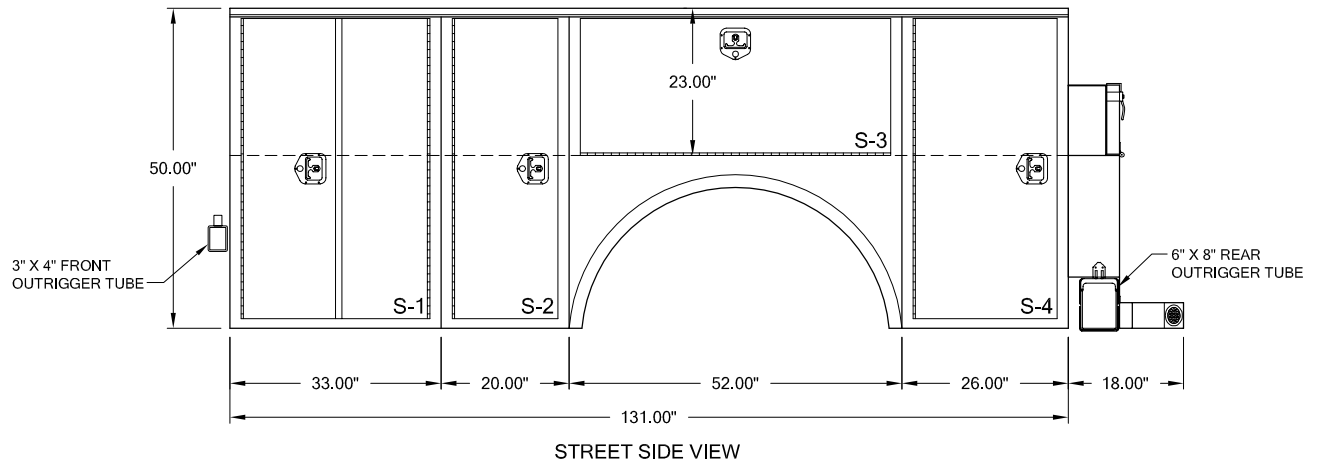


HT 50-131-FLT



NOTES:

- 10 GA. DIAMOND PLATE STEEL BED WALL & COMP'T TOPS
- 12 GA. & 14 GA. JET KOTE GALVANEAL STEEL BODY
- DOUBLE PANEL JET KOTE GALVANEAL STEEL DOORS W/ SPRING DOOR CHECKS
- FLAT 1/8" DIAMOND PLATE DECK WITHOUT WHEEL WELLS
- FULL LENGTH STAINLESS STEEL PIANO HINGE, PIN & T-HANDLE LATCHES W/ LOCKS
- FULL LENGTH DRIP RAIL OVER ALL COMPARTMENT DOORS
- UNOBSTRUCTED CRANE REINFORCED COMPARTMENTS
- TUBULAR LONGITUDINAL FRAME & CRANE COMPARTMENT CROSS MEMBERS
- AUTOMOTIVE TYPE DOOR SEALS & BODY UNDERCOATING

CLEAR DOOR OPENINGS

- S-1/C-1 = 44.00"H X 27.00"W
- S-2/C-2 = 44.00"H X 14.00"W
- S-3/C-3 = 19.00"H X 46.00"W
- S-4/C-4 = 44.00"H X 20.00"W



VENTURO CRANE BODIES

HT 50-131-FLT

SCALE:

N.T.S.

DATE:

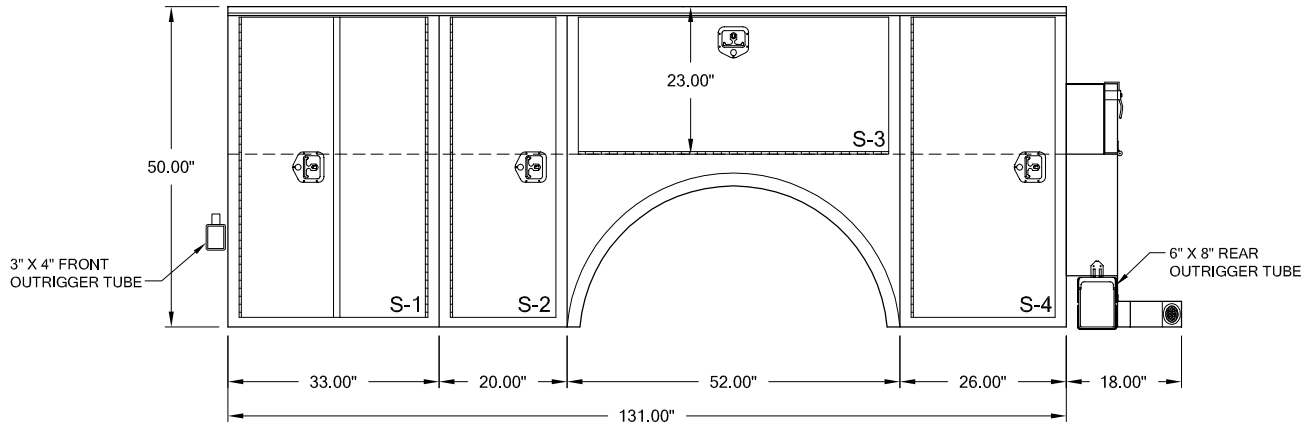
09/30/2005

SHEET:

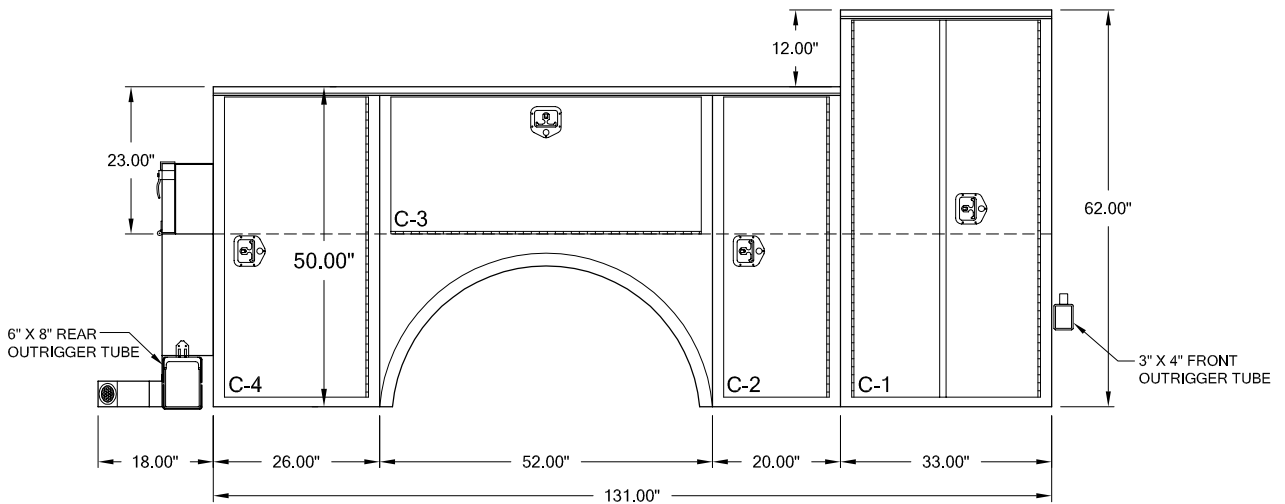
1 OF 1

REV: DATE

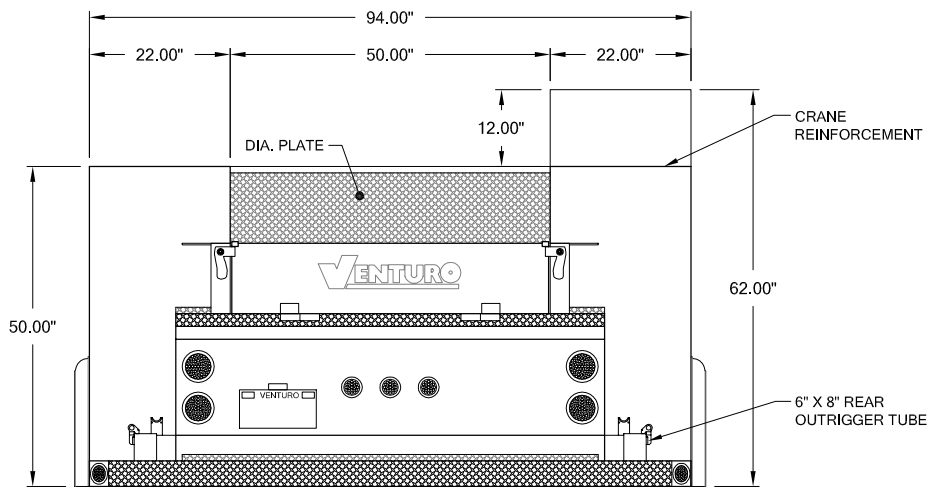
HT 50-131-TFC



STREET SIDE VIEW



CURB SIDE VIEW



REAR VIEW

NOTES:

- 10 GA. DIAMOND PLATE STEEL BED WALL & COMP'T TOPS
- 12 GA. & 14 GA. JET KOTE GALVANEAL STEEL BODY
- DOUBLE PANEL JET KOTE GALVANEAL STEEL DOORS W/ SPRING DOOR CHECKS
- FLAT 1/8" DIAMOND PLATE DECK WITHOUT WHEEL WELLS
- FULL LENGTH STAINLESS STEEL PIANO HINGE, PIN & T-HANDLE LATCHES W/ LOCKS
- FULL LENGTH DRIP RAIL OVER ALL COMPARTMENT DOORS
- UNOBSTRUCTED CRANE REINFORCED COMPARTMENTS
- TUBULAR LONGITUDINAL FRAME & CRANE COMPARTMENT CROSS MEMBERS
- AUTOMOTIVE TYPE DOOR SEALS & BODY UNDERCOATING

CLEAR DOOR OPENINGS

S-1 = 44.00"H X 27.00"W	C-1 = 56.00"H X 27.00"W
S-2 = 44.00"H X 14.00"W	C-2 = 44.00"H X 14.00"W
S-3 = 19.00"H X 46.00"W	C-3 = 19.00"H X 46.00"W
S-4 = 44.00"H X 20.00"W	C-4 = 44.00"H X 20.00"W



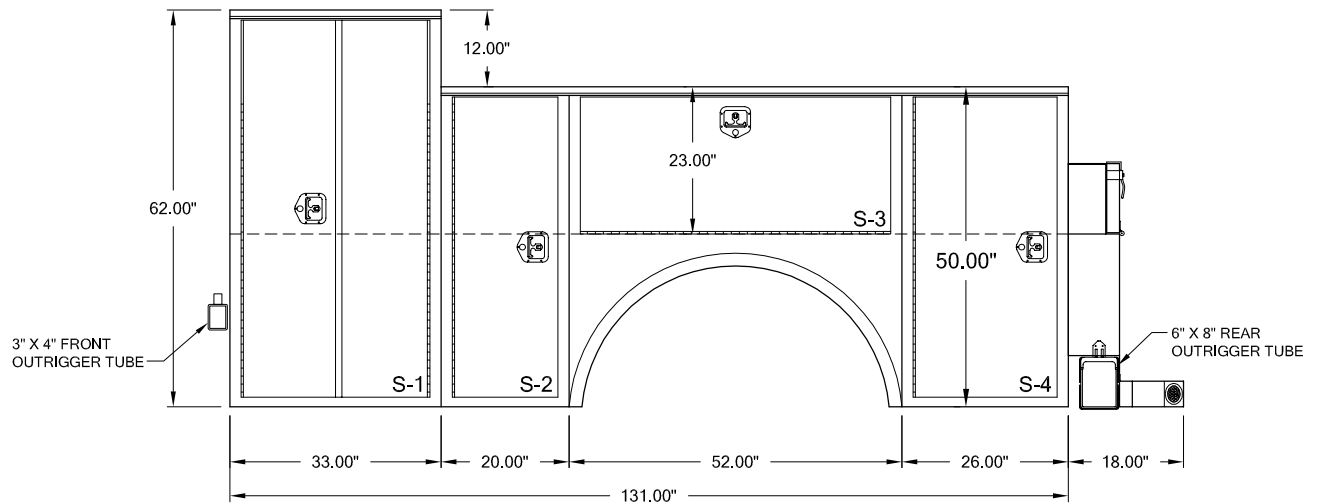
VENTURO CRANE BODIES

HT 50-131-TFC

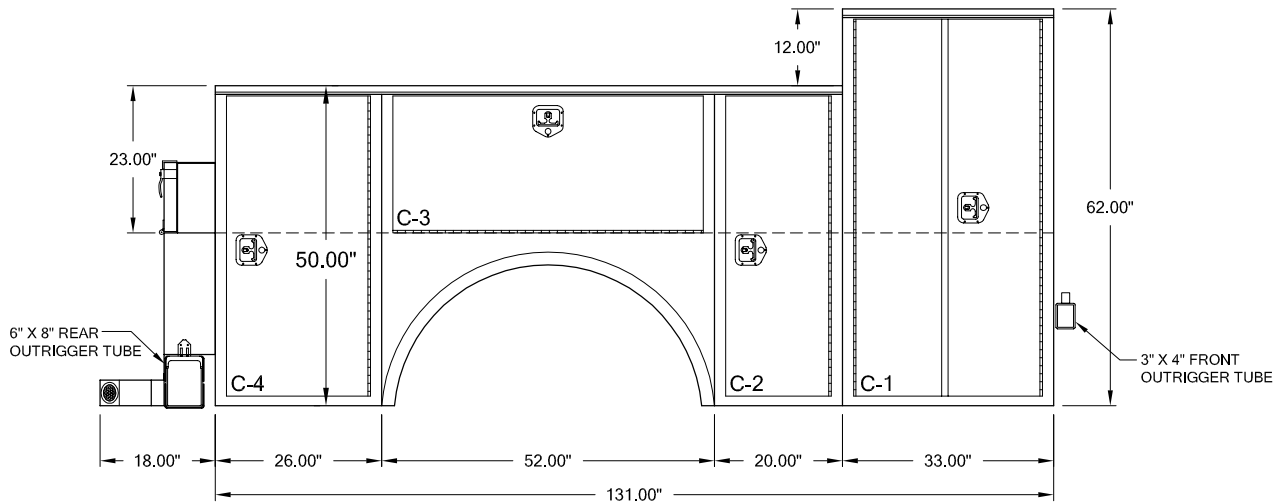
SCALE: N.T.S. DATE: 09/30/2005 SHEET: 1 OF 1

REV.	DATE

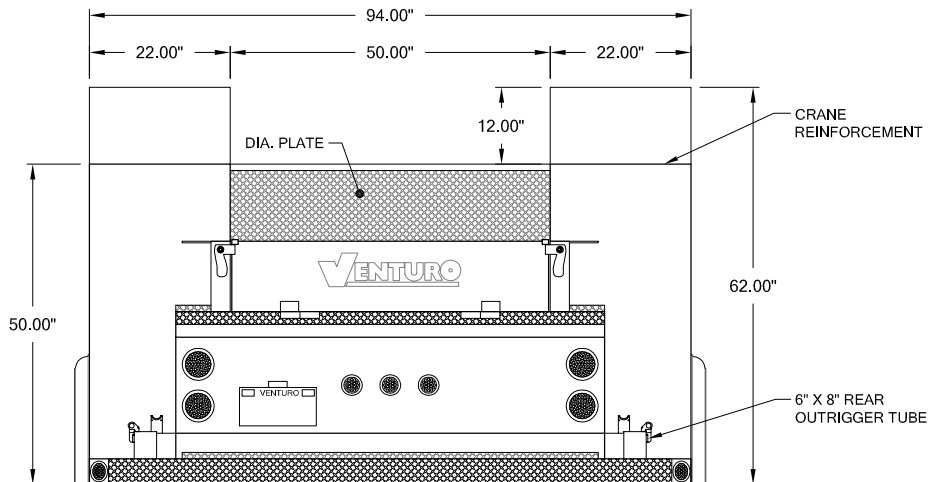
HT 50-131-DTF



STREET SIDE VIEW



CURB SIDE VIEW



REAR VIEW

NOTES:

- 10 GA. DIAMOND PLATE STEEL BED WALL & COMP'T TOPS
- 12 GA. & 14 GA. JET KOTE GALVANEAL STEEL BODY
- DOUBLE PANEL JET KOTE GALVANEAL STEEL DOORS W/ SPRING DOOR CHECKS
- FLAT 1/8" DIAMOND PLATE DECK WITHOUT WHEEL WELLS
- FULL LENGTH STAINLESS STEEL PIANO HINGE, PIN & T-HANDLE LATCHES W/ LOCKS
- FULL LENGTH DRIP RAIL OVER ALL COMPARTMENT DOORS
- UNOBSTRUCTED CRANE REINFORCED COMPARTMENTS
- TUBULAR LONGITUDINAL FRAME & CRANE COMPARTMENT CROSS MEMBERS
- AUTOMOTIVE TYPE DOOR SEALS & BODY UNDERCOATING

CLEAR DOOR OPENINGS

- S-1/C-1 = 56.00"H X 27.00"W
- S-2/C-2 = 44.00"H X 14.00"W
- S-3/C-3 = 19.00"H X 46.00"W
- S-4/C-4 = 44.00"H X 20.00"W

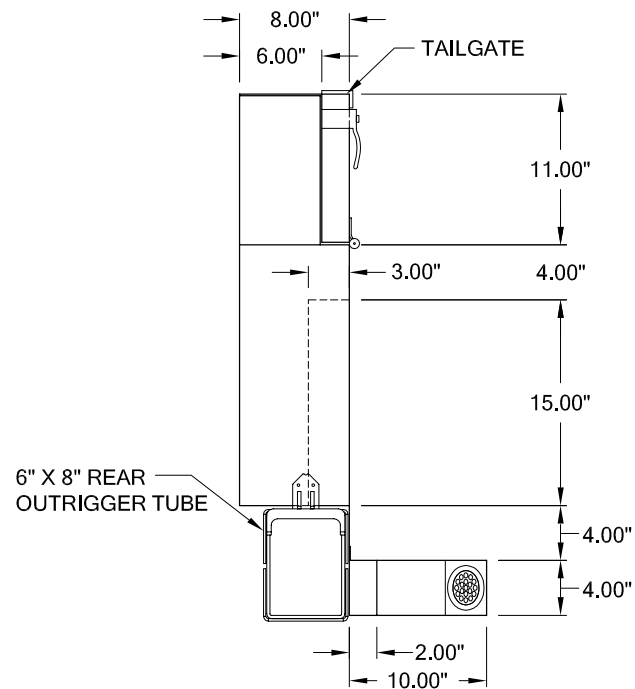
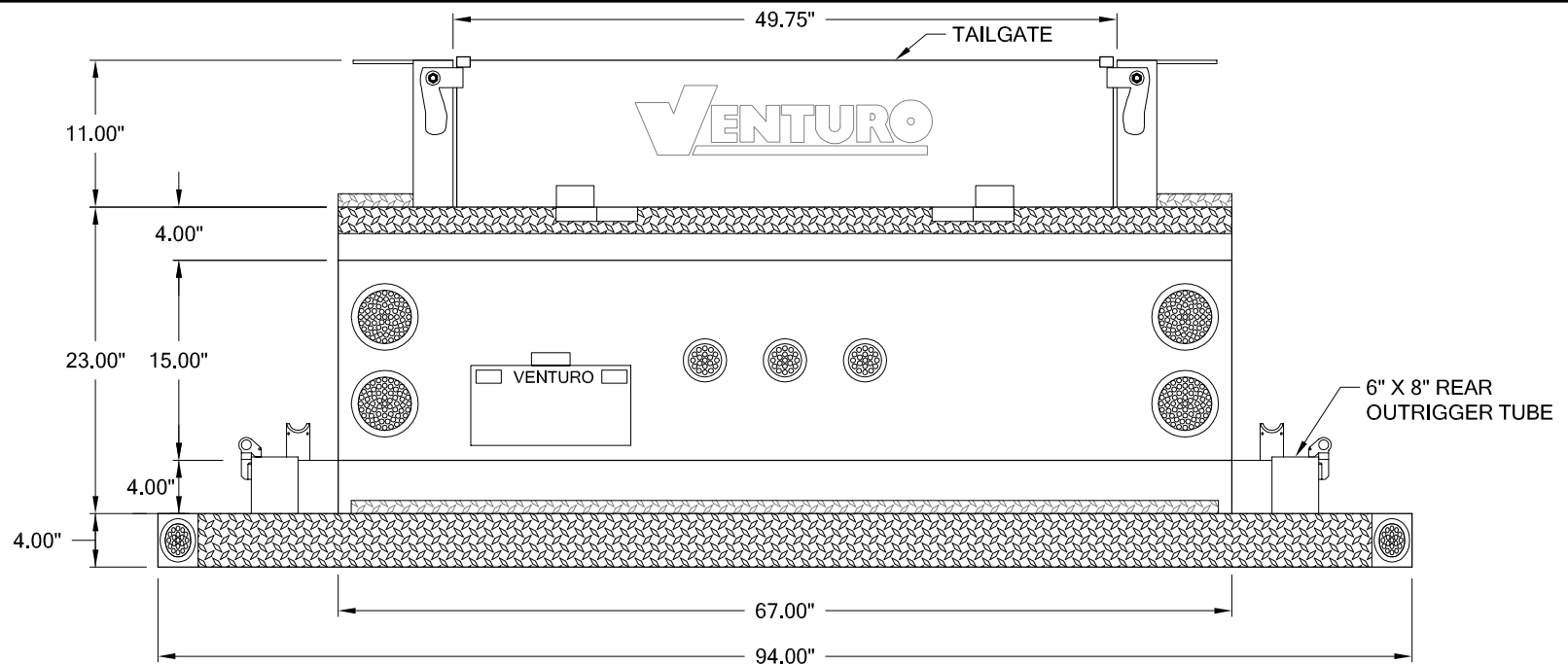


VENTURO CRANE BODIES

HT 50-131-DTF

SCALE: N.T.S. DATE: 09/30/2005 SHEET: 1 OF 1

REV.	DATE



HT50 SERIES - CRANE BODY

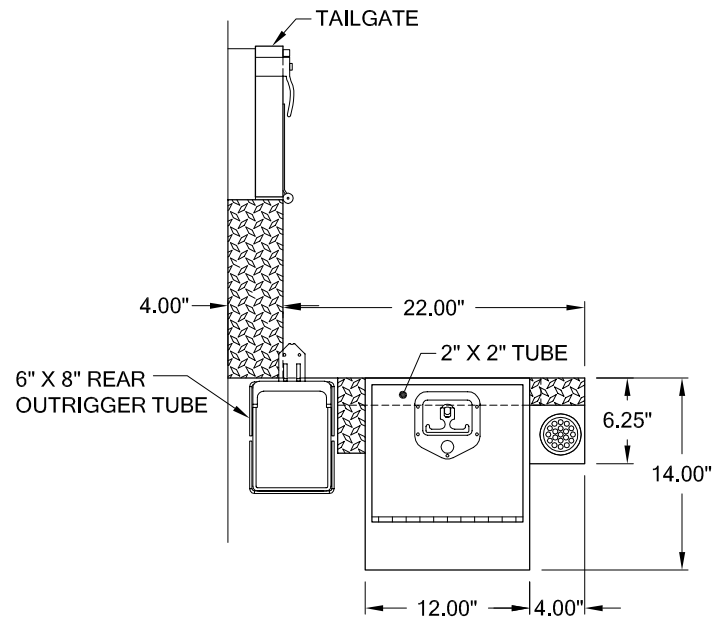
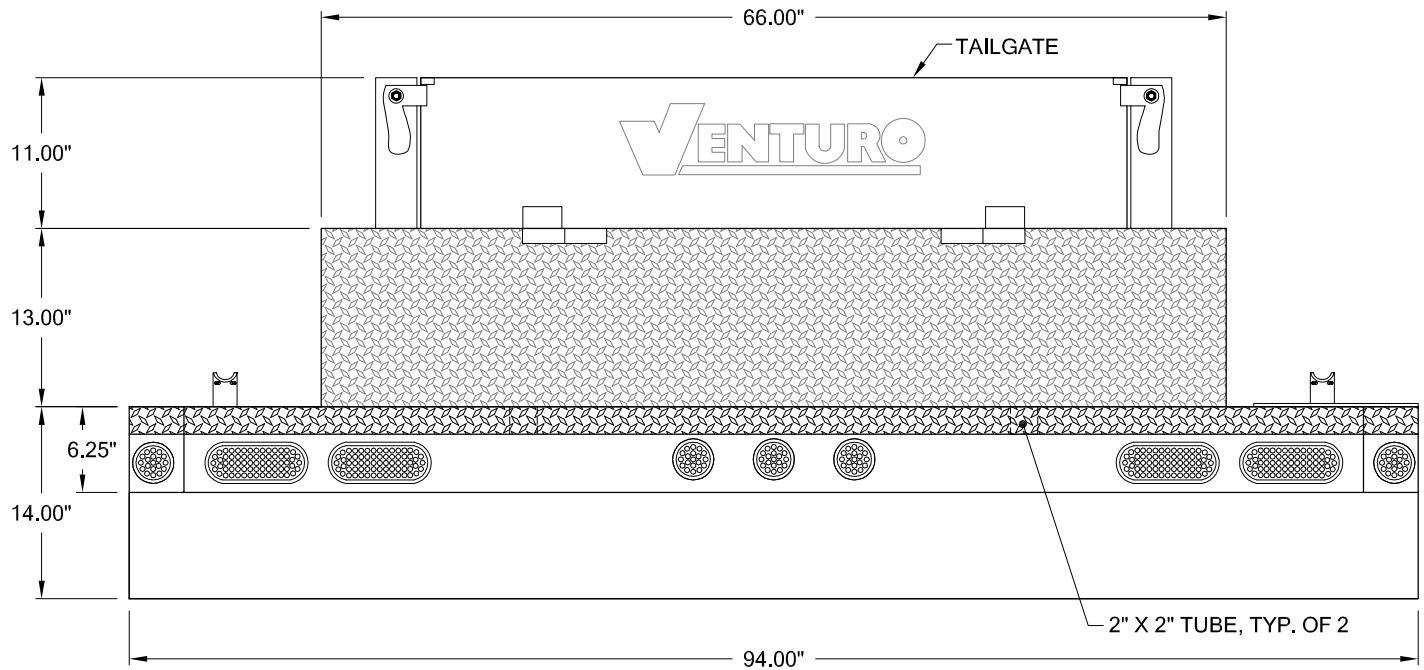
STANDARD BUMPER

SCALE:
N.T.S.

DATE:
09/07/2005

SHEET:
1 OF 1

REV.	DATE



HT50 SERIES - CRANE BODY

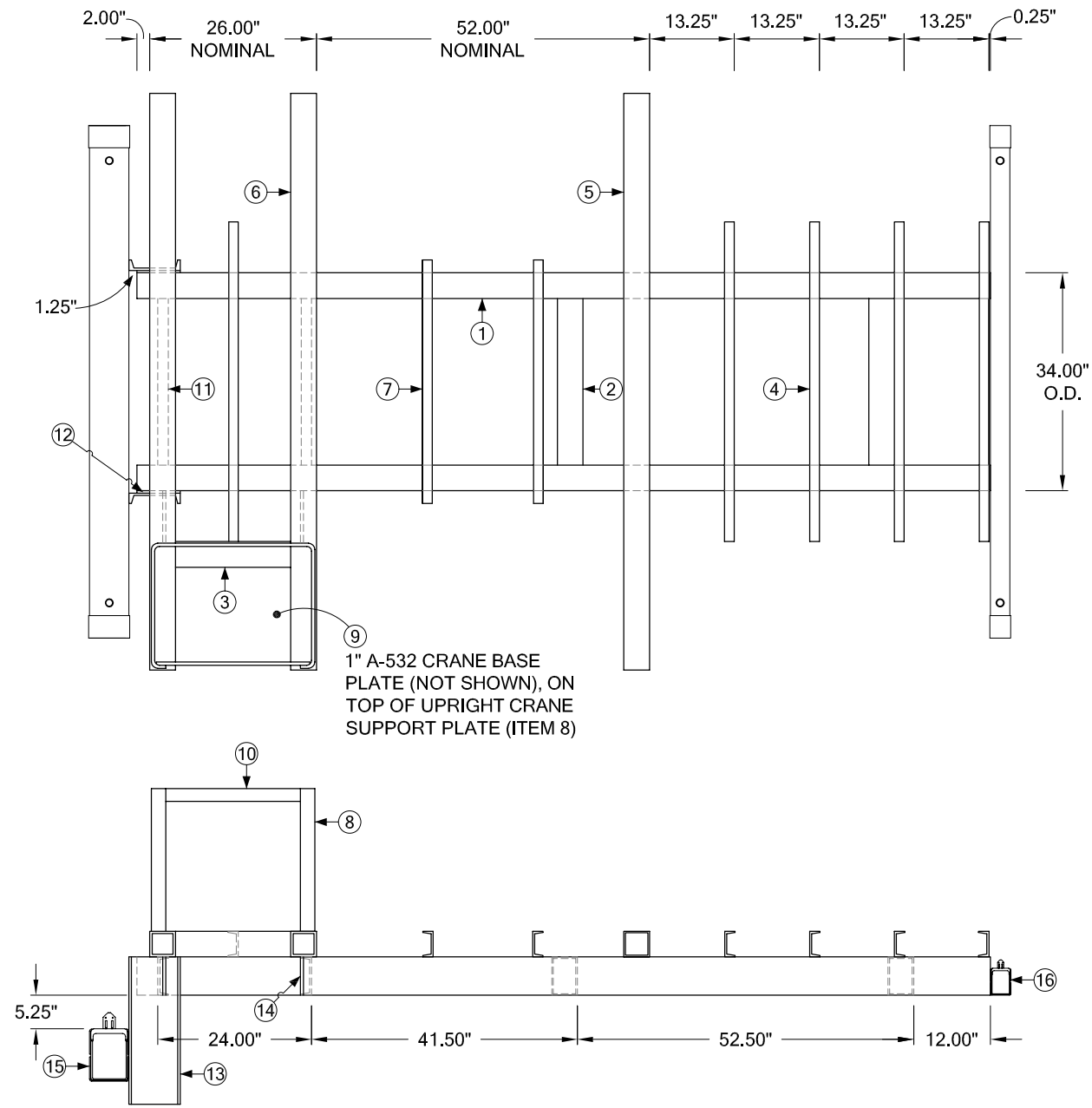
WBB - 50 DD

SCALE:
N.T.S.

DATE:
09/07/2005

SHEET:
1 OF 1

REV.	DATE



ITEM	QTY	DESCRIPTION
1	2	6" x 4" x .250 RECT. STEEL TUBE= 133.25"L
2	2	6" x 4" x .250 RECT. STEEL TUBE= 26"L
3	1	4" x 4" x .250 RECT. STEEL TUBE= 18"L
4	5	C4 x 5.4 STRUCT. STEEL CHANNEL= 49-7/8"L
5	1	4" x 4" x .250 RECT. STEEL TUBE = 90"L
6	2	4" x 4" x .375 RECT. STEEL TUBE = 90"L
7	2	C4 x 5.4 STRUCT. STEEL CHANNEL = 38"L
8	1	1/2" x 22.25"H A-36 STEEL PLATE UPRIGHT CRANE SUPPORT
9	1	1" x 20" x 25.50" A-532 CRANE BASE PLATE. (NOT SHOWN)
10	1	3" x 1/2" STEEL FLAT BAR = 24"L
11	2	C6 x 8.2 STRUCT. STEEL CHANNEL = 26.75"L
12	2	3/8" x 6" x 6" STEEL PLATE SPACER
13	2	C8 x 11.5 STRUCT. STEEL CHANNEL = 23"L
14	2	1/2" x 6" STEEL FLAT BAR 8"L
15	1	6" x 8" OUTRIGGER - REAR
16	1	3" x 4" OUTRIGGER - FRONT



VENTURO CRANE BODY		REV:	DATE
HT 50-131 STD. SUB-FRAME			
SCALE:	DATE:	SHEET:	
N.T.S.	08/08/2006	1 OF 1	
		0	04/04/2006
		1	08/08/2006