

HYDRAULIC CRANES HT45KX



MAX. CAPACITY	7500 lbs 7800 lbs
CRANE RATING	44000 ft/lbs 45600 ft/lbs
MAX. REACH	25 ft 30 ft
MIN. GVWR	16,000 lbs
CONTROLS	VLC™

VLC™ SYSTEM CONTROLS

Multiple Safety and Capacity Alerts

Green/Yellow/Red alert light located on the underside of the boom.

Overload/Stability Safety

The VLC system controls and prevents any type of overload on the crane and also provides stability and grade control.

Wireless Remote

The wireless remote, pistol-grip controller is a standard feature as part of the VLC™ system for ALL proportionally-controlled hydraulic Venturo service cranes.



The Venturo HT45KX with VLC™ controls features a maximum capacity from 7,500 – 7,800 lbs. Venturo's new Electronic Crane Control Management System provides added safety and benefits for crane operators. Benefits include a standard, wireless, pistol-grip controller, overload protection which controls and prevents any type of overload, LCD Display Screen alerts, transmitter handle vibrations, green/yellow/red alert lights under boom, and corresponding lights on the receiver. The LCD display shows percentage of load, boom angle in degrees and percentage of total capacity during crane operation. The VLC™ system also provides vehicle stability and grade control.

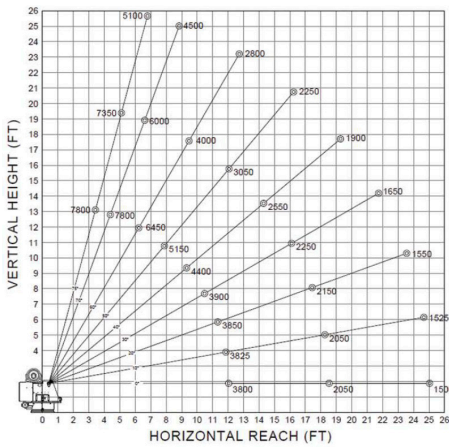
FEATURES

- **AUTO ADJUST ANTI-TWO BLOCK**
 Innovative, rugged and compact anti-two block design automatically adjusts to boom angle. This minimizes hook-to-boom tip height and is less prone to damage.
- **CUSTOM H-VALVING**
 Provides high hydraulic flow for safe crane function, minimizes quick, jerky functions
- **SLEW DRIVE**
 Extra gear that allows for smooth hydraulic rotation, eliminates jerky movements while under load
- **HEXAGONAL BOOM DESIGN**
 Greater strength and Increased Load Capacity
- **HIGH WIRE ROPE GAUGES**
 Increased Strength and durability during operations under load
- **COUNTER-BALANCE VALVES**
 All cylinders include load bearing counter-balance valves to prevent loads from dropping
- **REAR COVERS**
 Rear covers now have new knobs that simply twist on/off that allow easier rear cover removal, no tool needed

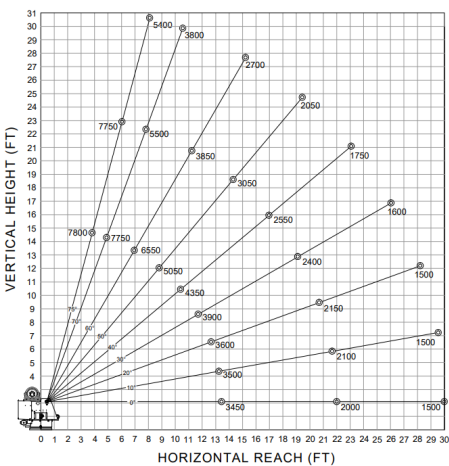
HYDRAULIC CRANES HT45KX

MAXIMUM LOAD CAPACITY

25 ft



30 ft



SPECIFICATIONS - 25 FT | 30 FT

Lifting Capacities:	25 ft: 7,800 30 ft: 7,800
Crane Rating:	45,000 ft-lbs
Mounting Space:	16" x 16"
Stowed Height:	36-7/8"
Rope Diameter:	3/8" @ 100'
Line pull speed:	60 ft/min @ 12 GPM (Single) 30 ft/min @ 12 GPM (Double)
Max. Single-line:	25 ft: 3,900 lbs 30 ft: 3,900 lbs
Max. Double-line:	25 ft: 7,800 lbs 30 ft: 7,800 lbs
Rotation:	400°
Power Supply Requirements:	PTO & Pump Required 10 gpm @ 3,000 psi
Hydraulic Req:	25 gal (single-stage) 40 gal (tandem)
Boom Elevation:	-8° to +75°
Controls:	VLC™ (Venturo Logic Controls) Standard Wireless Remote
Boom Extension:	25 ft: 12' - 18' - 25' Full Hydraulic 30 ft: 13.5' - 21' - 30' Full Hydraulic
Weight:	1960 lbs / 1990 lbs
Minimum Vehicle Class:	Class 4 or 5 (16,000 lbs GVWR)
Optional:	Engine Start/Stop & Throttle Controls

*Venturo Body: VP40 & VP45 Crane Service Body

