

# ELECTRIC - HYDRAULIC CRANES ET6K



## SPECIFICATIONS

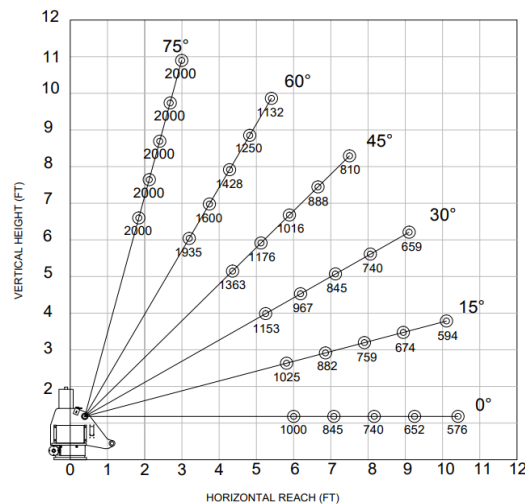
<b>Lifting Capacities:</b>	2,000 lbs
<b>Crane Rating:</b>	6,000 ft-lbs
<b>Mounting Space:</b>	12 1/2" x 17 1/4"
<b>Stowed Height:</b>	24-1/4"
<b>Rope Diameter:</b>	3/16" @ 50'
<b>Line Pull Speed</b>	30 ft/min (Single-line)
	18 ft/min (Double-line)
<b>Max. Single-line:</b>	1,000 lbs
<b>Max. Double-line:</b>	2,000 lbs
<b>Rotation:</b>	360° Continuous
<b>Power Supply Requirements:</b>	<b>Power Supply:</b> Electric 12V DC <b>Requirements:</b> 12v DC Battery
<b>Hydraulic Req:</b>	Self-Contained w/ Power Unit
<b>Boom Elevation:</b>	-8° to +75°
<b>Controls:</b>	Electric 12V DC On/Off Function
<b>Boom Extension:</b>	Manual: 6' - 10'
<b>Weight:</b>	380lbs
<b>Minimum Vehicle Class:</b>	Class 2 (8,000 lbs GVWR)
<b>Optional:</b>	- Coded - Coded & Wireless



The ET6K service crane is a light-weight, cost-effective choice for a variety of industries and general service applications on any truck with a GVWR of 8,000 lbs or less. The ET6K features 2,000 lbs of maximum capacity and a 6,000 ft-lb crane rating.

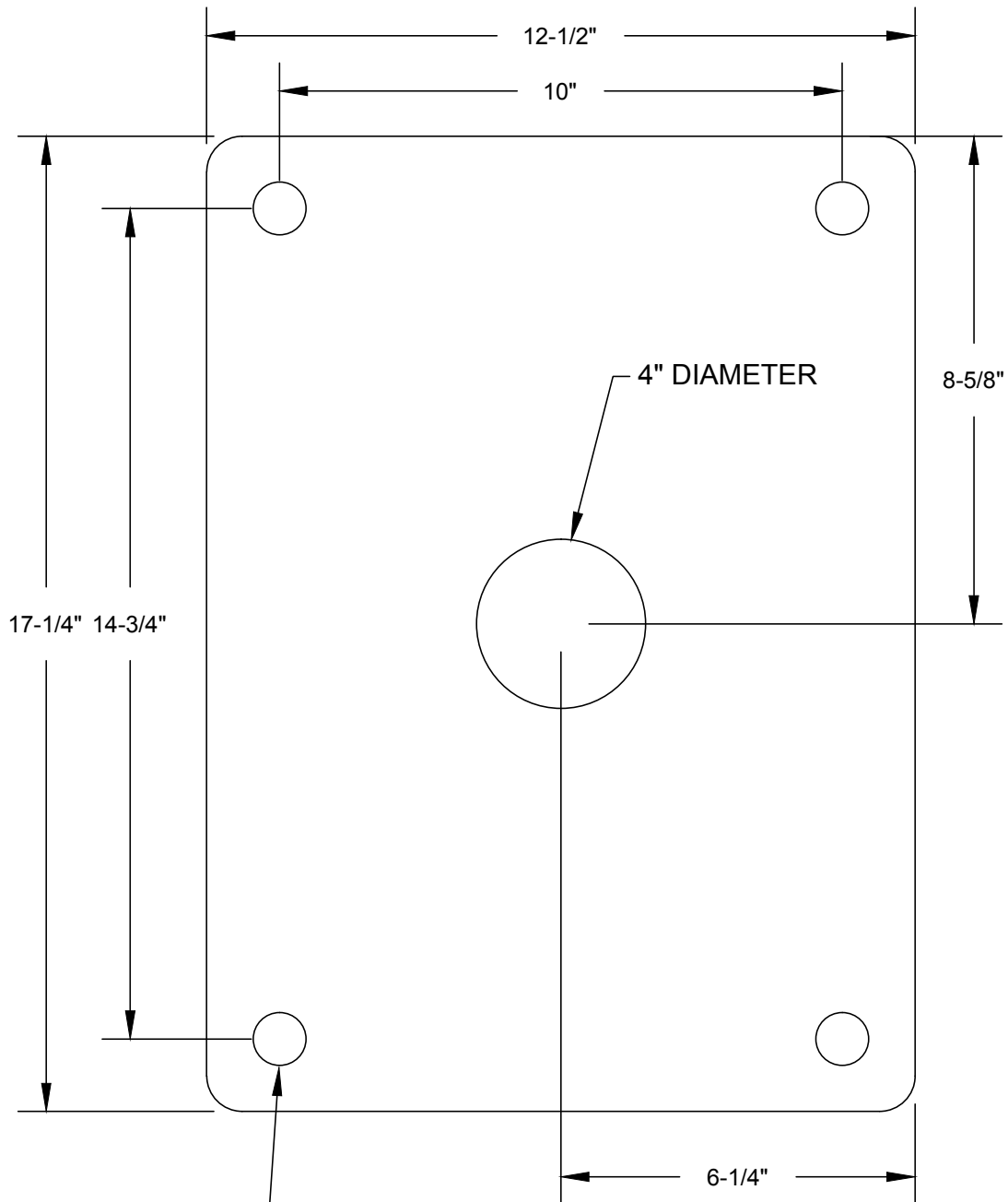
## FEATURES

- **INDUSTRY LEADING IN ELECTRIC-HYDRAULIC CRANES**
- **POWERFUL DC ELECTRIC WINCH**  
The ET series winches combine a powerful permanent magnet DC motor with robust sealing with proven 3-stage, all-metal gear train. Permanent grease lubrication means years of trouble-free service.
- **MANUAL CRANE OVERRIDE**  
Each ET series crane gives the user the ability to operate and stow the crane if there is power loss through the remote
- **POWERFUL HYDRAULIC SLEW DRIVE**  
Driven from high quality durable electric motor
- **COUNTER-BALANCE VALVE**  
Counterbalance valving in all cylinders for increase safety and protection during operation



\*OSHA Certification Exempt

# CRANE BASE MOUNTING HOLE TEMPLATE



15/16" DIAMETER  
 SIZED FOR 7/8"-9 GRADE 8 MOUNTING BOLTS  
 TORQUE TO 455 FT\*LBS



VENCO VENTURO INDUSTRIES LLC  
 CINCINNATI, OHIO

TITLE  
 MOUNTING DIMENSIONS

DATE  
 05-30-23

SECTION  
 C100

ET6K

SUPERSEDES  
 -

26011