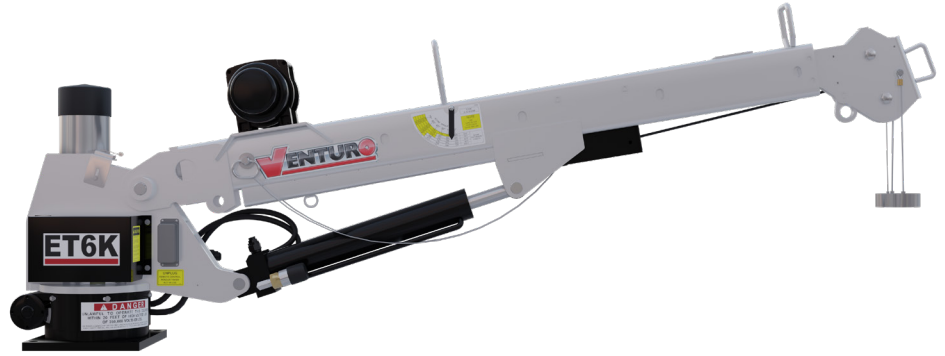


ELECTRIC - HYDRAULIC CRANES ET6K



SPECIFICATIONS

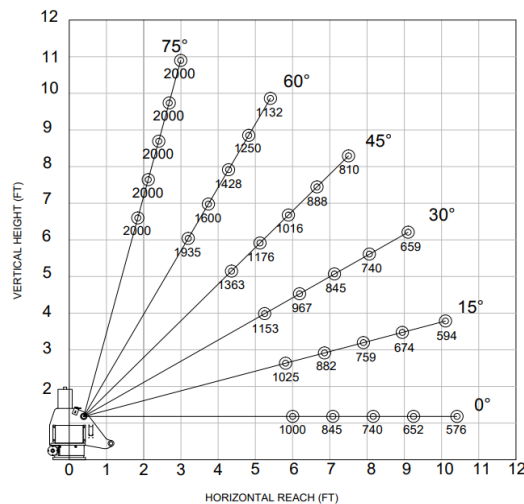
| | |
|-----------------------------------|--|
| Lifting Capacities: | 2,000 lbs |
| Crane Rating: | 6,000 ft-lbs |
| Mounting Space: | 12 1/2" x 17 1/4" |
| Stowed Height: | 24-1/4" |
| Rope Diameter: | 3/16" @ 50' |
| Line Pull Speed | 30 ft/min (Single-line) 18 ft/min (Double-line) |
| Max. Single-line: | 1,000 lbs |
| Max. Double-line: | 2,000 lbs |
| Rotation: | 360° Continuous |
| Power Supply Requirements: | Power Supply: Electric 12V DC Requirements: 12v DC Battery |
| Hydraulic Req: | Self-Contained w/ Power Unit |

| | |
|-------------------------------|---------------------------------------|
| Boom Elevation: | -8° to +75° |
| Controls: | Electric 12V DC On/Off Function |
| Boom Extension: | Manual: 6' - 10' |
| Weight: | 380lbs |
| Minimum Vehicle Class: | Class 2 (8,000 lbs GVWR) |
| Optional: | - Coded - Coded & Wireless |

The ET6K service crane is a light-weight, cost-effective choice for a variety of industries and general service applications on any truck with a GVWR of 8,000 lbs or less. The ET6K features 2,000 lbs of maximum capacity and a 6,000 ft-lb crane rating.

FEATURES

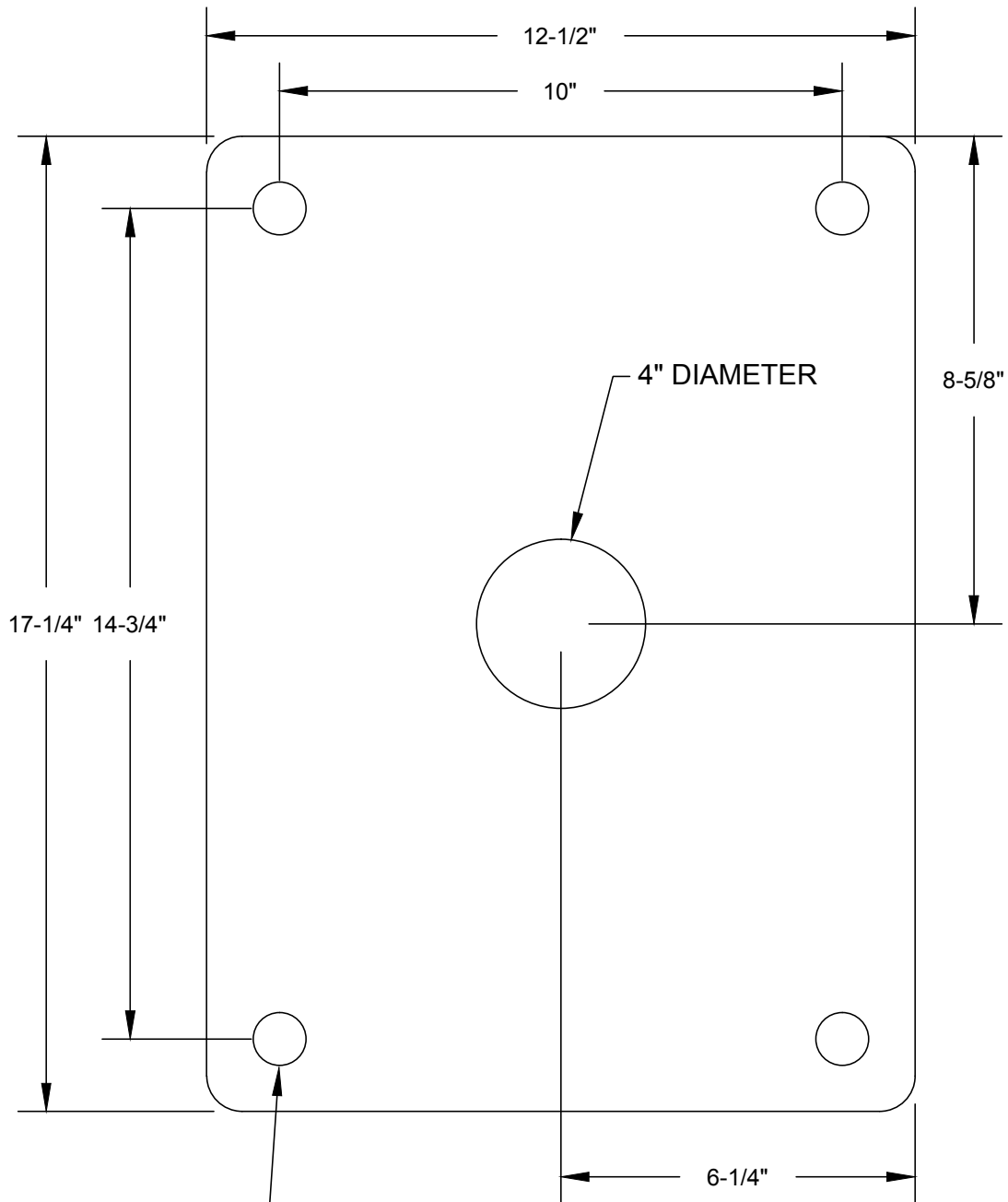
- **INDUSTRY LEADING IN ELECTRIC-HYDRAULIC CRANES**
- **POWERFUL DC ELECTRIC WINCH**
The ET series winches combine a powerful permanent magnet DC motor with robust sealing with proven 3-stage, all-metal gear train. Permanent grease lubrication means years of trouble-free service.
- **MANUAL CRANE OVERRIDE**
Each ET series crane gives the user the ability to operate and stow the crane if there is power loss through the remote
- **POWERFUL HYDRAULIC SLEW DRIVE**
Driven from high quality durable electric motor
- **COUNTER-BALANCE VALVE**
Counterbalance valving in all cylinders for increase safety and protection during operation



*OSHA Certification Exempt

*Venturo Body: VP16 Crane Service Body

CRANE BASE MOUNTING HOLE TEMPLATE



15/16" DIAMETER
 SIZED FOR 7/8"-9 GRADE 8 MOUNTING BOLTS
 TORQUE TO 455 FT*LBS



VENCO VENTURO INDUSTRIES LLC
 CINCINNATI, OHIO

TITLE
 MOUNTING DIMENSIONS

DATE
 05-30-23

SECTION
 C100

ET6K

SUPERSEDES
 -

26011