

ELECTRIC - HYDRAULIC CRANES ET36KXX



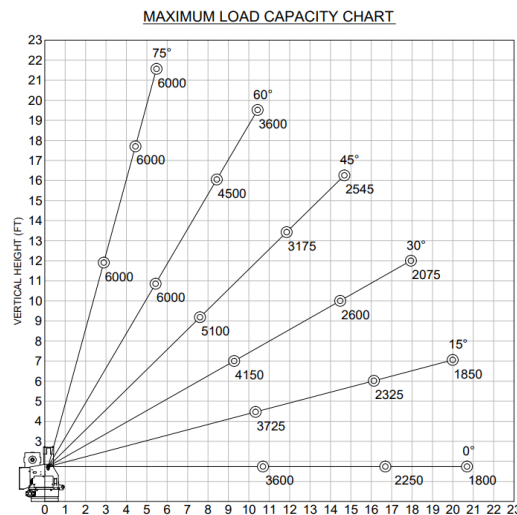
SPECIFICATIONS

Lifting Capacities:	6,000 lbs
Crane Rating:	36,000 ft-lbs
Mounting Space:	17" x 17"
Stowed Height:	32"
Rope Diameter:	5/16" @ 80'
Line Pull Speed	28 ft/min (Single-line) 14 ft/min (Double-line)
Max. Single-line:	3,000 lbs
Max. Double-line:	6,000 lbs
Rotation:	360° Continuous
Power Supply Requirements:	Power Supply: Electric 12V DC Requirements: 12v DC Battery
Hydraulic Req:	Self-Contained w/ Power Unit
Boom Elevation:	-8° to +75°
Controls:	Electric On/Off Functions
Hydraulic Power	Elevation/ Rotation/ Extension
Boom Extension:	Power: 10' - 16' - 20'
Weight:	1150 lbs
Minimum Vehicle Class:	Class 3 (14,500 lbs GVWR) - Proportional - Non-Proportional - Coded - Coded & Wireless
Optional:	

The Venturo ET36KX is a 36,000 ft-lb electric-hydraulic service crane with a 6,000 lb maximum capacity at 6 ft. This larger crane gives operators the distance and strength they need for heavier loads at a short distance. This electric crane features full-hydraulic boom extension out to 20 ft.

FEATURES

- **INDUSTRY LEADING IN ELECTRIC-HYDRAULIC CRANES**
- **POWERFUL DC ELECTRIC WINCH**
The ET series winches combine a powerful permanent magnet DC motor with robust sealing with proven 3-stage, all-metal gear train. Permanent grease lubrication means years of trouble-free service.
- **MANUAL CRANE OVERRIDE**
Each ET series crane gives the user the ability to operate and stow the crane if there is power loss through the remote
- **POWERFUL HYDRAULIC SLEW DRIVE**
Driven from high quality durable electric motor
- **COUNTER-BALANCE VALVE**
Counterbalance valving in all cylinders for increase safety and protection during operation



*Venturo Body: VP40 & VP45
Crane Service Body