

# ELECTRIC - HYDRAULIC CRANES ET25KXX



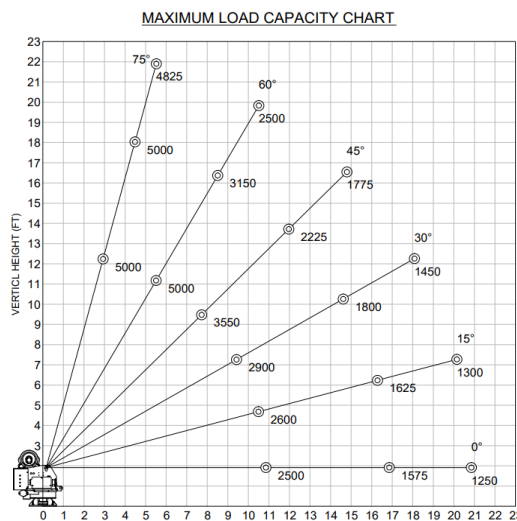
## SPECIFICATIONS

<b>Lifting Capacities:</b>	5,000 lbs
<b>Crane Rating:</b>	25,000 lbs
<b>Mounting Space:</b>	17" x 17"
<b>Stowed Height:</b>	32"
<b>Rope Diameter:</b>	5/16" @ 80'
<b>Line Pull Speed</b>	28 ft/min (Single-line) 11 ft/min (Double-line)
<b>Max. Single-line:</b>	2,500 lbs
<b>Max. Double-line:</b>	5,000 lbs
<b>Rotation:</b>	360° Continuous
<b>Power Supply Requirements:</b>	<b>Power Supply:</b> Electric 12V DC <b>Requirements:</b> 12v DC Battery
<b>Hydraulic Req:</b>	Self-Contained w/ Power Unit
<b>Boom Elevation:</b>	-8° to +75°
<b>Controls:</b>	Electric On/Off Functions
<b>Hydraulic Power</b>	Elevation/ Rotation/ Extension
<b>Boom Extension:</b>	Power: 10' - 16' - 20'
<b>Weight:</b>	1500lbs
<b>Minimum Vehicle Class:</b>	Class 3 (10,500 lbs GVWR) - Proportional - Non-Proportional - Corded - Corded & Wireless
<b>Optional:</b>	

The Venturo ET25KXX is a 25,000 ft-lb electric-hydraulic service crane with a 5,000 lb maximum capacity at 5 ft. This larger crane gives operators the distance and strength they need for heavier loads at a short distance. The ET25KXX includes powered, full-hydraulic extension out to 20 ft.

## FEATURES

- **INDUSTRY LEADING IN ELECTRIC-HYDRAULIC CRANES**
- **POWERFUL DC ELECTRIC WINCH**  
The ET series winches combine a powerful permanent magnet DC motor with robust sealing with proven 3-stage, all-metal gear train. Permanent grease lubrication means years of trouble-free service.
- **MANUAL CRANE OVERRIDE**  
Each ET series crane gives the user the ability to operate and stow the crane if there is power loss through the remote
- **POWERFUL HYDRAULIC SLEW DRIVE**  
Driven from high quality durable electric motor
- **COUNTER-BALANCE VALVE**  
Counterbalance valving in all cylinders for increase safety and protection during operation



\*Venturo Body: VP40 & VP45  
Crane Service Body