

ELECTRIC - HYDRAULIC CRANES 4020E (ET16KX-20)



SPECIFICATIONS

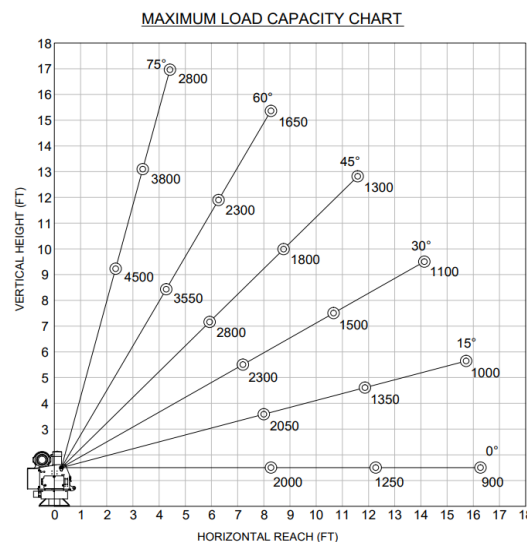
Lifting Capacities:	4,000 lbs (800 lbs @ 20 ft)
Crane Rating:	16,000 ft-lbs
Mounting Space:	14" x 14"
Stowed Height:	26-5/8"
Rope Diameter:	5/16" @ 80'
Line Pull Speed	25 ft/min (Single-line)
	4 ft/min (Double-line)
Max. Single-line:	2,000 lbs
Max. Double-line:	4,000 lbs
Rotation:	360° Continuous
Power Supply Requirements:	Power Supply: Electric 12V DC Requirements: 12v DC Battery
Hydraulic Req:	Self-Contained w/ Power Unit
Boom Elevation:	-8° to +75°
Controls:	- 12V Electric - Optional: Proportional Controls
Hydraulic Power	Elevation/ Rotation/ Extension
Boom Extension:	Power: 10' - 16' - 20'
Weight:	1020 lbs
Minimum Vehicle Class:	Class 3 (10,500 lbs GVWR)
Optional:	- Proportional - Non-Proportional - Corded - Corded & Wireless



The Venturo 4020E is a 16,000 ft-lb electric-hydraulic service crane with a 4,000 lb maximum capacity. This crane allows operators a crane application without the need for a heavy crane service body. A reinforced crane compartment on a standard utility body provides operators the strength they need on a standard service truck.

FEATURES

- **INDUSTRY LEADING IN ELECTRIC-HYDRAULIC CRANES**
- **POWERFUL DC ELECTRIC WINCH**
The ET series winches combine a powerful permanent magnet DC motor with robust sealing with proven 3-stage, all-metal gear train. Permanent grease lubrication means years of trouble-free service.
- **MANUAL CRANE OVERRIDE**
Each ET series crane gives the user the ability to operate and stow the crane if there is power loss through the remote
- **POWERFUL HYDRAULIC SLEW DRIVE**
Driven from high quality durable electric motor
- **COUNTER-BALANCE VALVE**
Counterbalance valving in all cylinders for increase safety and protection during operation



*Venturo Body: VP16 Crane Service Body