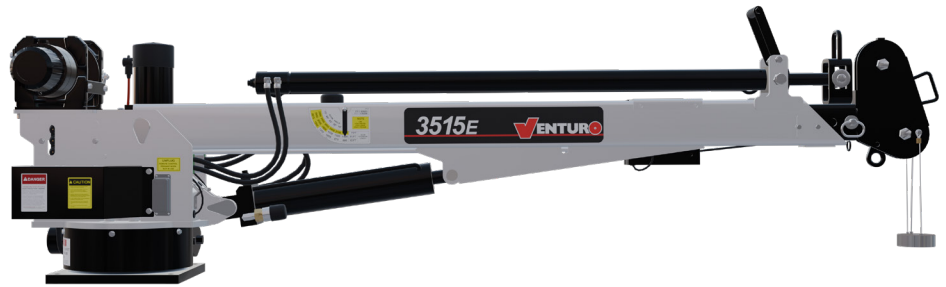


ELECTRIC - HYDRAULIC CRANES

3515E (ET12KX-15)



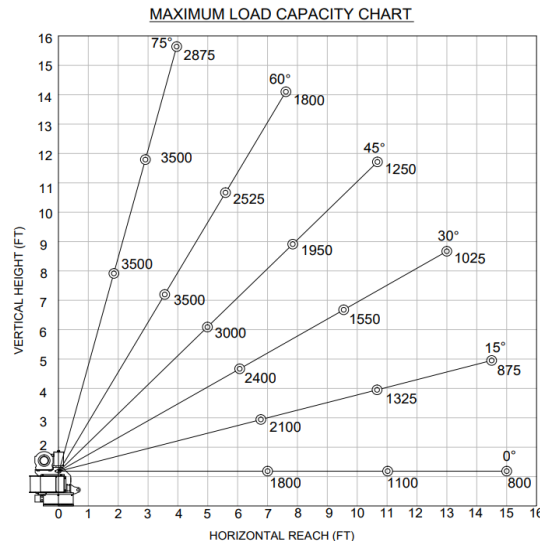
SPECIFICATIONS

Lifting Capacities:	3,500 lbs
Crane Rating:	12,000 ft-lbs
Mounting Space:	14" x 14"
Stowed Height:	26-5/8"
Rope Diameter:	1/4" @ 65'
Line Pull Speed	25 ft/min (Single-line) 4 ft/min (Double-line)
Max. Single-line:	1,750 lbs
Max. Double-line:	3,500 lbs
Rotation:	360° Continuous
Power Supply Requirements:	Power Supply: Electric 12V DC Requirements: 12v DC Battery
Hydraulic Req:	Self-Contained w/ Power Unit
Boom Elevation:	-8° to +75°
Controls:	12V DC Non-Proportional
Boom Extension:	Power: 7' - 11' Manual: 11' - 15'
Weight:	700lbs
Minimum Vehicle Class:	Class 2 (8,800 lbs GVWR)
Optional:	- Corded - Corded & Wireless

The Venturo 3515E service crane is a versatile application that is neither too large or small for a majority of lifting jobs. This crane has been utilized heavily in municipal/public works lifting anything from service equipment to fire hydrants throughout the United States. With a 12,000 ft-lb crane rating and a 3,500 lb maximum capacity, the 3515E can be installed on trucks with a minimum 8,800 lbs GVWR.

FEATURES

- **INDUSTRY LEADING IN ELECTRIC-HYDRAULIC CRANES**
- **POWERFUL DC ELECTRIC WINCH**
The ET series winches combine a powerful permanent magnet DC motor with robust sealing with proven 3-stage, all-metal gear train. Permanent grease lubrication means years of trouble-free service.
- **MANUAL CRANE OVERRIDE**
Each ET series crane gives the user the ability to operate and stow the crane if there is power loss through the remote
- **POWERFUL HYDRAULIC SLEW DRIVE**
Driven from high quality durable electric motor
- **COUNTER-BALANCE VALVE**
Counterbalance valving in all cylinders for increase safety and protection during operation



*Venturo Body: VP16 Crane Service Body